

MONTHLY MEMBERSHIP PROGRESS REPORT

District 14 N

Results as of: 3/31/2026

GMT:

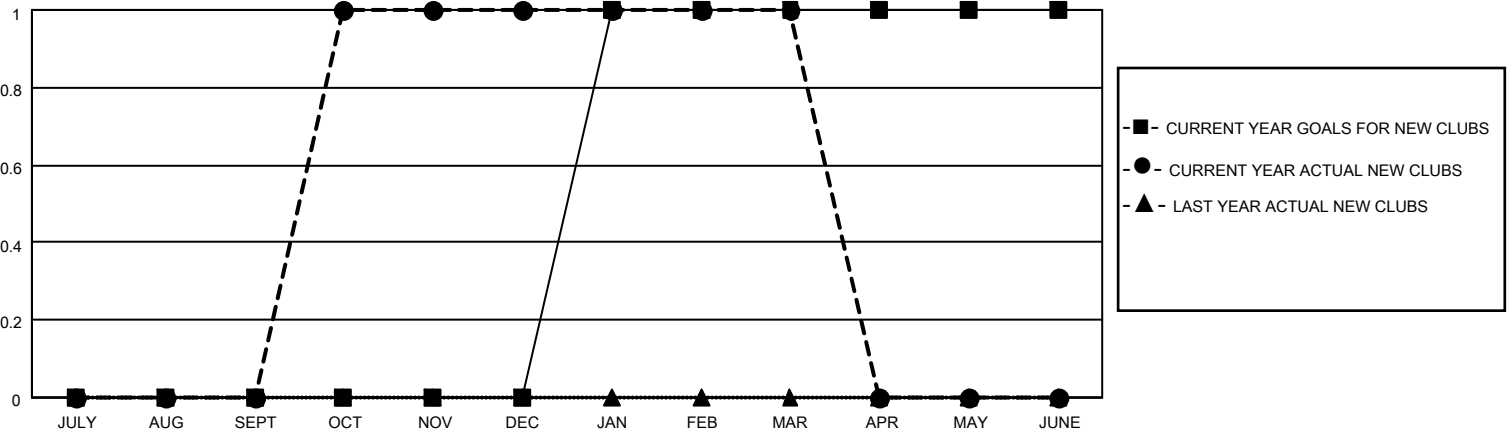
LOCATION PENNSYLVANIA

GMT CA

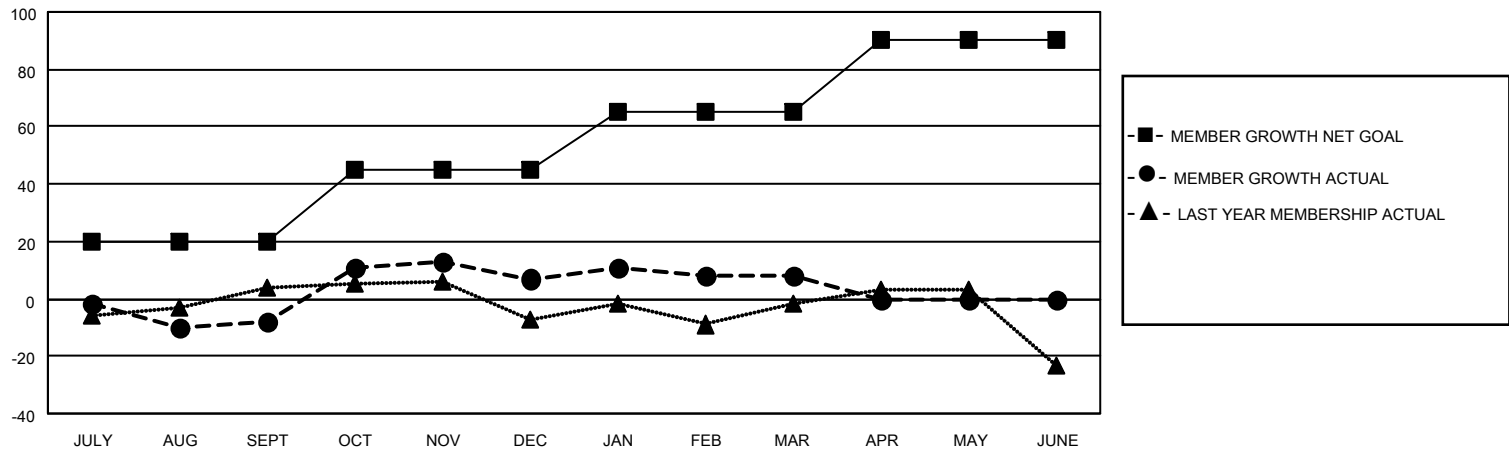
| Clubs | | | |
|-----------------------|---------------|-----------|---------------|
| RESULTS FOR 2025-2026 | | | |
| QUARTER | NEW CLUB GOAL | NEW CLUBS | DROPPED CLUBS |
| JULY/AUG/SEPT | 0 | 0 | 1 |
| OCT/NOV/DEC | 0 | 1 | 1 |
| JAN/FEB/MAR | 1 | 0 | 0 |
| APR/MAY/JUNE | 0 | 0 | 0 |

| Members | | | |
|-----------------------|------------------------|----------------------|--|
| RESULTS FOR 2025-2026 | | | |
| QUARTER | MEMBER GROWTH NET GOAL | MEMBER GROWTH ACTUAL | DROPPED MEMBERS ACTUAL (including transfers) |
| JULY/AUG/SEPT | 20 | 20 | 27 |
| OCT/NOV/DEC | 25 | 31 | 16 |
| JAN/FEB/MAR | 20 | 11 | 9 |
| APR/MAY/JUNE | 25 | 0 | 0 |

GOALS AND ACTUAL NEW CLUBS CUMULATIVE



GOALS AND ACTUAL MEMBERS CUMULATIVE



| | | | |
|------------------------|--|------------------------------------|--------------|
| DROPPED CLUBS: 2 | 17 CLUBS OF 38 ADDED 1 OR MORE NEW MEMBERS | <u>GENDER DISTRIBUTION</u> | |
| <u>DROPPED MEMBERS</u> | | MALE | 644 (68.58%) |
| DECEASED | 15 | FEMALE | 295 (31.42%) |
| CLUB CANCELLED | 6 | TOTAL FAMILY UNIT MEMBERS 184 | |
| OTHER | 31 | | |
| TOTAL | 52 | FAMILY MEMBERS PAYING HALF DUES 95 | |

[CLICK HERE FOR CUMULATIVE MEMBERSHIP DATA](#)